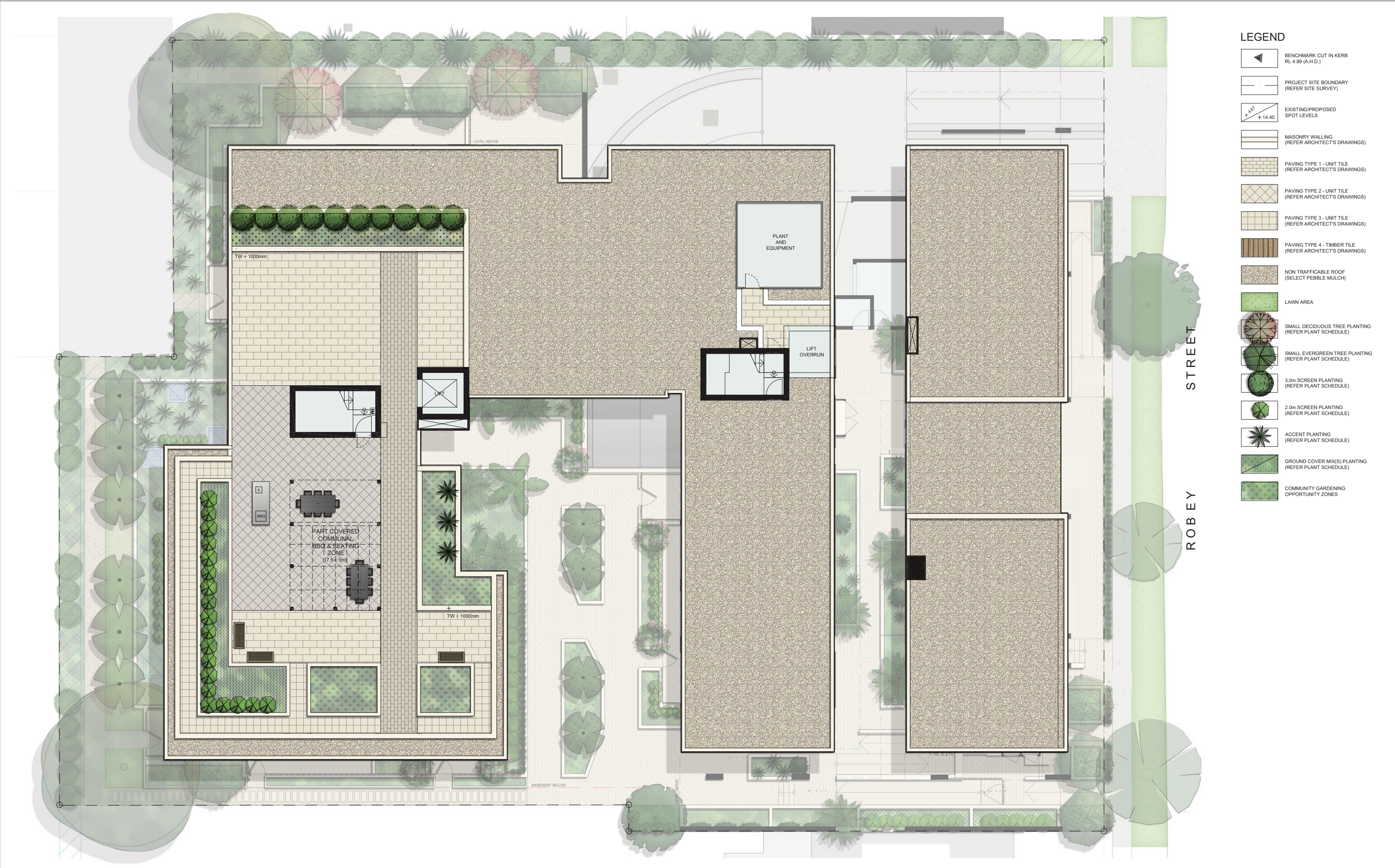




<div><div>greenplan</div><div>GPO Box 769, Mascot NSW 2020 P: 1800 464 207 M: 0407 061 386 E: landscape@greenplan.net.au W: www.greenplan.net.au</div></div>		<div><div>DRAWING NOTES</div><div><div><div>1. DO NOT SCALE DRAWINGS. WRITTEN DIMENSIONS GOVERN.</div><div>2. ALL DIMENSIONS ARE IN MILLIMETRES UNLESS NOTED OTHERWISE.</div><div>3. ALL DIMENSIONS SHALL BE VERIFIED ON SITE BEFORE PROCEEDING WITH THE WORK.</div><div>4. THIS DRAWING MUST BE READ IN CONJUNCTION WITH ALL RELEVANT CONTRACTS, SPECIFICATIONS AND DRAWINGS.</div><div>5. THE LEVELS SHOWN ON THIS PLAN HAVE BEEN BASED ON SURVEY BY CEDAR SURVEYORS, DATED JUNE 2016.</div></div><div><div>THIS DRAWING IS AN UNCONTROLLED COPY, UNLESS NOTED OTHERWISE.</div></div></div></div> <td colspan="2"><div><div><div><div>C</div><div>FOR DEVELOPMENT APPLICATION</div><div>23/02/2018</div></div><div><div>B</div><div>FOR INFORMATION</div><div>19/02/2018</div></div><div><div>A</div><div>FOR INFORMATION</div><div>07/02/2018</div></div><div><div>REV</div><div>DESCRIPTION</div><div>DATE</div></div></div></div></td> <td colspan="2"><div><div><div>NORTH</div><div><div><div></div></div><div>MAGNETIC NORTH</div></div></div></div></td> <td colspan="2"><div><div><div>PLANNER</div><div>CHAPMAN PLANNING</div><div>5/187 Marion Street Leichhardt NSW 2040 Tel 02 9560 1718</div></div><div><div>ENGINEER</div><div>S&amp;G CONSULTANTS</div><div>Suite 113, Level 1, Building A 20 Lexington Drive Bella Vista NSW 2153 Tel 02 8883 4239</div></div></div><td colspan="2"><div><div><div>CLIENT</div><div>LANDMARK GROUP</div><div>Suite 2201, Level 22, Tower Two Westfield Bondi Junction Tel 02 8095 6322</div></div><div><div>ARCHITECT</div><div>DKO</div><div>119 Redfern Street Redfern NSW 2016 Tel 02 8346 4500</div></div></div><td colspan="2"><div><div><div>PROJECT</div><div>MIXED USE RESIDENTIAL</div><div>19-25 ROBEY STREET</div><div>MASCOT</div></div><div><div>DRAWING TITLE</div><div>LANDSCAPE CONCEPT</div><div>GROUND FLOOR</div></div></div><td colspan="2"><div><div><div>SCALE</div><div>1:100 @ A1 / 1:200 @ A3</div><div>FOR DEVELOPMENT APPLICATION</div></div><div><div>STATUS</div><div>DESIGNED/DRAWN</div><div>VERIFIED</div><div>DATE</div><div>JOB NUMBER</div><div>18705</div></div></div><td colspan="2"><div><div><div>DRAWING NUMBER</div><div>LSDA-201</div></div><div><div>ISSUE</div><div>C</div></div></div></td></td></td></td></td>		<div><div><div><div>C</div><div>FOR DEVELOPMENT APPLICATION</div><div>23/02/2018</div></div><div><div>B</div><div>FOR INFORMATION</div><div>19/02/2018</div></div><div><div>A</div><div>FOR INFORMATION</div><div>07/02/2018</div></div><div><div>REV</div><div>DESCRIPTION</div><div>DATE</div></div></div></div>		<div><div><div>NORTH</div><div><div><div></div></div><div>MAGNETIC NORTH</div></div></div></div>		<div><div><div>PLANNER</div><div>CHAPMAN PLANNING</div><div>5/187 Marion Street Leichhardt NSW 2040 Tel 02 9560 1718</div></div><div><div>ENGINEER</div><div>S&amp;G CONSULTANTS</div><div>Suite 113, Level 1, Building A 20 Lexington Drive Bella Vista NSW 2153 Tel 02 8883 4239</div></div></div> <td colspan="2"><div><div><div>CLIENT</div><div>LANDMARK GROUP</div><div>Suite 2201, Level 22, Tower Two Westfield Bondi Junction Tel 02 8095 6322</div></div><div><div>ARCHITECT</div><div>DKO</div><div>119 Redfern Street Redfern NSW 2016 Tel 02 8346 4500</div></div></div><td colspan="2"><div><div><div>PROJECT</div><div>MIXED USE RESIDENTIAL</div><div>19-25 ROBEY STREET</div><div>MASCOT</div></div><div><div>DRAWING TITLE</div><div>LANDSCAPE CONCEPT</div><div>GROUND FLOOR</div></div></div><td colspan="2"><div><div><div>SCALE</div><div>1:100 @ A1 / 1:200 @ A3</div><div>FOR DEVELOPMENT APPLICATION</div></div><div><div>STATUS</div><div>DESIGNED/DRAWN</div><div>VERIFIED</div><div>DATE</div><div>JOB NUMBER</div><div>18705</div></div></div><td colspan="2"><div><div><div>DRAWING NUMBER</div><div>LSDA-201</div></div><div><div>ISSUE</div><div>C</div></div></div></td></td></td></td>		<div><div><div>CLIENT</div><div>LANDMARK GROUP</div><div>Suite 2201, Level 22, Tower Two Westfield Bondi Junction Tel 02 8095 6322</div></div><div><div>ARCHITECT</div><div>DKO</div><div>119 Redfern Street Redfern NSW 2016 Tel 02 8346 4500</div></div></div> <td colspan="2"><div><div><div>PROJECT</div><div>MIXED USE RESIDENTIAL</div><div>19-25 ROBEY STREET</div><div>MASCOT</div></div><div><div>DRAWING TITLE</div><div>LANDSCAPE CONCEPT</div><div>GROUND FLOOR</div></div></div><td colspan="2"><div><div><div>SCALE</div><div>1:100 @ A1 / 1:200 @ A3</div><div>FOR DEVELOPMENT APPLICATION</div></div><div><div>STATUS</div><div>DESIGNED/DRAWN</div><div>VERIFIED</div><div>DATE</div><div>JOB NUMBER</div><div>18705</div></div></div><td colspan="2"><div><div><div>DRAWING NUMBER</div><div>LSDA-201</div></div><div><div>ISSUE</div><div>C</div></div></div></td></td></td>		<div><div><div>PROJECT</div><div>MIXED USE RESIDENTIAL</div><div>19-25 ROBEY STREET</div><div>MASCOT</div></div><div><div>DRAWING TITLE</div><div>LANDSCAPE CONCEPT</div><div>GROUND FLOOR</div></div></div> <td colspan="2"><div><div><div>SCALE</div><div>1:100 @ A1 / 1:200 @ A3</div><div>FOR DEVELOPMENT APPLICATION</div></div><div><div>STATUS</div><div>DESIGNED/DRAWN</div><div>VERIFIED</div><div>DATE</div><div>JOB NUMBER</div><div>18705</div></div></div><td colspan="2"><div><div><div>DRAWING NUMBER</div><div>LSDA-201</div></div><div><div>ISSUE</div><div>C</div></div></div></td></td>		<div><div><div>SCALE</div><div>1:100 @ A1 / 1:200 @ A3</div><div>FOR DEVELOPMENT APPLICATION</div></div><div><div>STATUS</div><div>DESIGNED/DRAWN</div><div>VERIFIED</div><div>DATE</div><div>JOB NUMBER</div><div>18705</div></div></div> <td colspan="2"><div><div><div>DRAWING NUMBER</div><div>LSDA-201</div></div><div><div>ISSUE</div><div>C</div></div></div></td>		<div><div><div>DRAWING NUMBER</div><div>LSDA-201</div></div><div><div>ISSUE</div><div>C</div></div></div>	
--	--	--	--	--	--	--	--	--	--	---	--	--	--	---	--	---	--





LEGEND

- BENCHMARK CUT IN KERB  
RL 4.89 (A.H.D.)
- PROJECT SITE BOUNDARY  
(REFER SITE SURVEY)
- EXISTING/PROPOSED  
SPOT LEVELS
- MASONRY WALLING  
(REFER ARCHITECT'S DRAWINGS)
- PAVING TYPE 1 - UNIT TILE  
(REFER ARCHITECT'S DRAWINGS)
- PAVING TYPE 2 - UNIT TILE  
(REFER ARCHITECT'S DRAWINGS)
- PAVING TYPE 3 - UNIT TILE  
(REFER ARCHITECT'S DRAWINGS)
- PAVING TYPE 4 - TIMBER TILE  
(REFER ARCHITECT'S DRAWINGS)
- NON TRAFFICABLE ROOF  
(SELECT PEBBLE MULCH)
- LAWN AREA
- SMALL DECIDUOUS TREE PLANTING  
(REFER PLANT SCHEDULE)
- SMALL EVERGREEN TREE PLANTING  
(REFER PLANT SCHEDULE)
- 3.0m SCREEN PLANTING  
(REFER PLANT SCHEDULE)
- 2.0m SCREEN PLANTING  
(REFER PLANT SCHEDULE)
- ACCENT PLANTING  
(REFER PLANT SCHEDULE)
- GROUND COVER MIX(S) PLANTING  
(REFER PLANT SCHEDULE)
- COMMUNITY GARDENING  
OPPORTUNITY ZONES

STREET

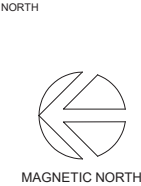
ROBEY

greenplan

GPO Box 769, Mascot NSW 2020  
P: 1800 464 207 M: 0407 061 386  
E: [landscape@greenplan.net.au](mailto:landscape@greenplan.net.au)  
W: [www.greenplan.net.au](http://www.greenplan.net.au)

DRAWING NOTES			
1.	DO NOT SCALE DRAWINGS. WRITTEN DIMENSIONS GOVERN.		
2.	ALL DIMENSIONS ARE IN MILLIMETRES UNLESS NOTED OTHERWISE.		
3.	ALL DIMENSIONS SHALL BE VERIFIED ON SITE BEFORE PROCEEDING WITH THE WORK.		
4.	THIS DRAWING MUST BE READ IN CONJUNCTION WITH ALL RELEVANT CONTRACTS, SPECIFICATIONS AND DRAWINGS.		
5.	THE LEVELS SHOWN ON THIS PLAN HAVE BEEN BASED ON SURVEY BY CEDAR SURVEYORS, DATED JUNE 2016.		
THIS DRAWING IS AN UNCONTROLLED COPY. UNLESS NOTED OTHERWISE.			

REV	DESCRIPTION	DATE
C	FOR DEVELOPMENT APPLICATION	23/02/2018
B	FOR INFORMATION	19/02/2018
A	FOR INFORMATION	07/02/2018
REV	DESCRIPTION	DATE



PLANNER  
**CHAPMAN PLANNING**  
5/187 Marion Street Leichhardt NSW 2040  
Tel 02 9560 1718

ENGINEER  
**S&G CONSULTANTS**  
Suite 113, Level 1, Building A  
20 Lexington Drive Bella Vista NSW 2153  
Tel 02 8883 4239

CLIENT  
**LANDMARK GROUP**  
Suite 2201, Level 22, Tower Two  
Westfield Bondi Junction  
Tel 02 8095 6322

ARCHITECT  
**DKO**  
119 Redfern Street Redfern NSW 2016  
Tel 02 8346 4500

PROJECT  
**MIXED USE RESIDENTIAL  
19-25 ROBEY STREET  
MASCOT**

DRAWING TITLE  
**LANDSCAPE CONCEPT  
ROOF FLOOR**

SCALE  
STATUS  
DESIGNED/DRAWN  
VERIFIED  
DATE  
JOB NUMBER

1:100 @ A1 / 1:200 @ A3  
FOR DEVELOPMENT APPLICATION  
HG/JW  
KS  
07/02/2018  
18705

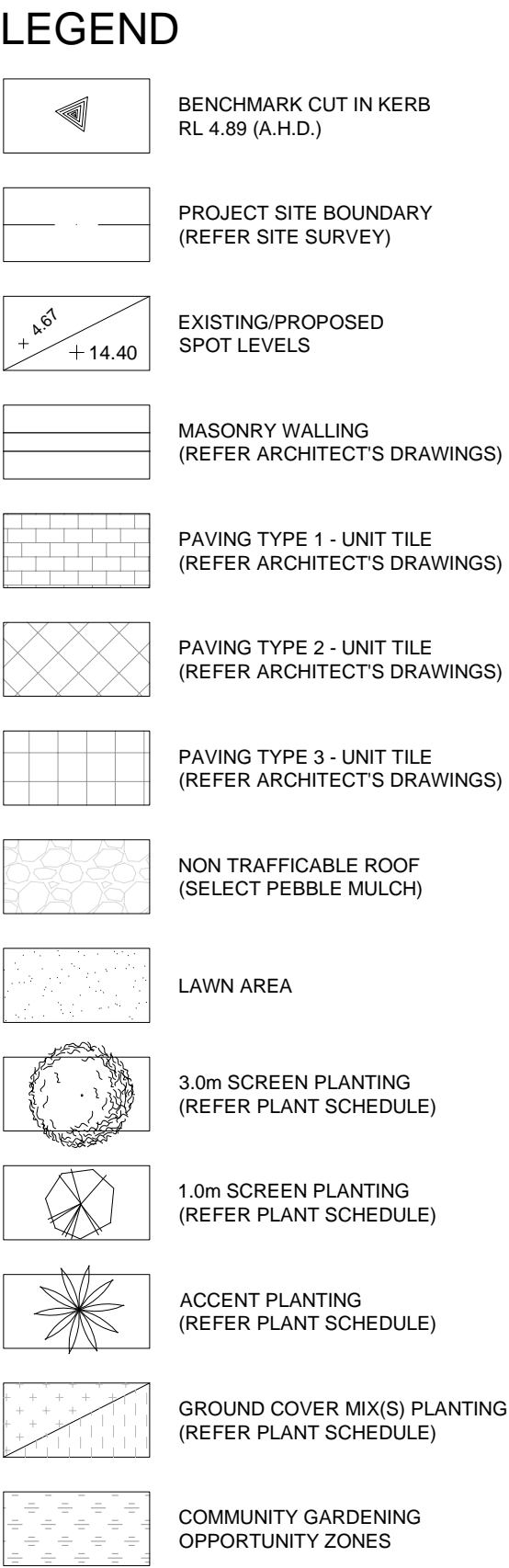
DRAWING NUMBER  
**LSDA-202**

ISSUE  
**C**









ROBEY







## HARD LANDSCAPE

REFER TO ARCHITECTURAL PLANS AND SPECIFICATION.

LOCATIONS AND FINISH AS PER ARCHITECTURAL SETOUT PLANS. CONSTRUCTION AND WATER PROOFING AS PER ENGINEERING DETAILS AND SPECIFICATION.

LOCATIONS AND FINISH AS PER ARCHITECTURAL  
SETOUT PLANS. CONSTRUCTION AS PER  
ENGINEERING DETAILS AND SPECIFICATION.

LOCATIONS AND FINISH AS PER ARCHITECTURAL SETOUT PLANS.

TIMBER EDGE - 75x25mm HARDWOOD WITH  
50x50mm HARDWOOD PEGS IN EACH CORNER.

**STANDARDS**  
STORAGE AND HANDLING OF PESTICIDES TO AS  
2507. SITE AND IMPORTED TOPSOIL TO AS 4419.  
COMPOSTS, SOIL CONDITIONERS AND MULCHES TO  
AS 4454.

**SOIL:** TESTS FOR IMPORTED TOPSOIL WITH CERTIFICATE NOTING THE SUITABILITY OF EACH SOIL TYPE FOR ITS SPECIFIED USE, SIMILARITY TO NATURALLY OCCURRING LOCAL SOIL, SUITABILITY FOR ESTABLISHMENT AND ON-GOING VIABILITY OF THE SITE SPECIFIED VEGETATION, AND ABSENCE OF ANY WEED PROPAGULES OR CONTAMINANTS.

**SAMPLES:** SUBMIT REPRESENTATIVE SAMPLES OF EACH MATERIAL PACKED TO PREVENT CONTAMINATION AND LABELLED TO INDICATE SOURCE AND CONTENT. SAMPLES TO REMAIN ON SITE FOR THE DURATION OF THE CONSTRUCT WORKS.

IMPORTED TOPSOIL AND/OR TOPSOIL WON AND STOCKPILED ON SITE. TOPSOIL TO BE OF A FRIABLE, PORUS NATURE. FREE FROM WEEDS AND WEED SEDS, BULBS, CORNS AND VEGETABLE PROPAGULES. FREE FROM REFUSE OR MATERIALS TOXIC TO HUMANS, ANIMALS OR PLANTS. FREE FROM STUMPS, ROOTS, CLAY LUMPS OR STONES LARGER THEN 50 mm IN SIZE. pH RANGE 5.5 to 7.5. MAXIMUM SOLUBLE SALT CONTENT 0.06% BY MASS. MINIMUM ORGANIC CONTENT 3% BY MASS.

PLANTING MEDIA TYPE A TO BE LIGHT WEIGHT  
PLANTER BOX MIX WITHOUT CLAY FINES.

PLANTING MEDIA TYPE B TO BE INORGANIC LIGHT WEIGHT PLANTER BOX MIX WITHOUT CLAY FINES OR ORGANIC MATTER.

PLANTING MEDIA TYPE C TO BE LIGHT WEIGHT  
PLANTER BOX MIX WITHOUT CLAY FINES AND  
SUITABLE FOR TURF UNDERLAY.

PLANTING MEDIA TYPE D TO BE ORGANIC GARDEN MIX AS PER AS 4419.

PLANTING MEDIA TYPE E TO BE TURF UNDERLAY MIX.

ORGANIC TYPE. 6.3:1.8:2.8  
NITROGEN:PHOSPHORUS:POTASSIUM RATIO.

**MULCH**  
ORGANIC HORTICULTURAL PINE BARK LANDSCAPE  
MULCH. 20 mm GRADED.

INORGANIC PEBBLE MULCH 5-40mm GRADED.

FOR ADVANCED STOCK, 2 STAKES, 25 x 25 x 2000 mm, SHARPENED AT ONE END DRIVEN INTO THE GROUND 1/3 OF OVERALL LENGTH. SECURE HESSIAN WEBBING IN A FIGURE OF EIGHT, STAPELLED TO STAKES.

**TURF:** SIR WALTER BUFFALO, FREE FROM WEEDS, SOIL PESTS AND DISEASE, 25 mm DEPTH OF DENSE, WELL ROOTED, VIGOROUS GRASS GROWTH WITH 25 mm DEPTH OF TOPSOIL. SPOILY SOUND UNBROKEN ROLLS IN STANDARY INDUSTRY LENGTHS AND 300 mm WIDTH.

**CONTAINER STOCK:** SPECIES AS PER SCHEDULE AND CLEARLY LABELLED. HEALTHY, OF GOOD FORM AND NOT SOFT OR FORCED, LARGE ROBUST ROOT SYSTEM, NOT ROOT BOUND, FREE FROM DISEASE AND INSECT PESTS. TREE STOCK SHOULD HAVE A SINGLE LEADING SHOOT.

**PREPARATION:** TRIM SUBGRADE TO BULK EARTHWORKS LEVELS AS REQUIRED BY FINISHED SURFACE LEVELS. HERBICIDE TREATMENT TO SUPPLIER'S INSTRUCTIONS, 2 WEEKS PRIOR TO PLANTING.

**SOIL CONDITIONING:** TO SOIL TESTING RESULTS.  
GENERALLY GYPSUM.

**RIPPING AND CULTIVATION:** RIP THE SURFACE AT 500 mm CENTRES TO A DEPTH OF 300 mm AND BREAK THE TOP 200mm OF PLANTING BED BY CULTIVATION TO A MAXIMUM SIZE OF 50 mm TO PRODUCE A LOOSE SURFACE AND REMOVE ALL LARGE STONES, RUBBISH AND OTHER MATERIALS THAT MAY HINDER PLANT ESTABLISHMENT.

**PLANTING MEDIA:** APPLY 300 mm DEPTH OF APPROVED TOPSOIL IN UNIFORM 100 mm DEPTH LAYERS CULTIVATING THE FIRST 100 mm INTO THE SUB-GRADE, THEN LIGHTLY COMPACTING EACH OTHER LAYER TO MAKE UP THE NECESSARY GRADES. ENSURE FINISHED SOIL LEVEL ALLOWS FOR APPLICATION OF MULCH.

**PLANT:** PLANTING HOLE SHALL BE 2 TIMES  
ROOTBALL WIDTH. PLACE PLANT IN HOLE TO FINISH  
TOP OF ROOTBALL FLUSH WITH SURROUNDING  
GARDEN BED AND BACKFILL WITH TOPSOIL. ADD  
APPROVED SLOW RELEASE FERTILISER. WATER  
IMMEDIATELY.

**MULCH:** PLACE APPROVED MULCH AT 75 mm DEPTH TO ENTIRE GARDEN BED, DISHED AROUND PLANT STEMS TO PREVENT COLLAR ROT. ENSURE FINISHED MULCH LEVEL IS 25 mm BELOW PAVED AREAS, KERBS OR GARDEN EDGING.

**RAISED GARDEN BED:** SAME AS ABOVE. ENSURE WATER PROOF MEMBRANE TO REAR OF WALL AND AGRICULTURAL DRAINAGE TO BASE OF WALL IS PROVIDED. REFER TO ENGINEERING PLANS AND SPECIFICATION.

**PREPARATION:** CONCRETE SCREED,  
WATERPROOFING, PROTECTION BOARDING,  
DRAINAGE CELL AND CLEAR CONNECTION TO SITE  
STORMWATER SYSTEM TO ENGINEER'S DETAILS  
AND SPECIFICATION.

**PLANTING MEDIA:** LIGHT WEIGHT PLANTER BOX MIX  
INSTALLED IN 100 mm LAYERS, LIGHTLY  
COMPACTED TO MAKE UP PROVIDED DEPTHS  
ALLOWABLE. ENSURE FINISHED SOIL LEVEL  
ALLOWS FOR MULCH.

**PLANT:** PLANTING HOLE SHALL BE 2 TIMES  
ROOTBALL WIDTH. PLACE PLANT IN HOLE TO FINISH  
TOP OF ROOTBALL FLUSH WITH SURROUNDING  
GARDEN BED AND BACKFILL WITH TOPSOIL. ADD  
APPROVED SLOW RELEASE FERTILISER. WATER  
IMMEDIATELY. ENSURE WATER PROOF MEMBRANE  
IS NOT DAMAGED.

**MULCH:** PLACE APPROVED MULCH AT 75 mm DEPTH TO ENTIRE GARDEN BED, DISHED AROUND PLANT STEMS TO PREVENT COLLAR ROT. ENSURE FINISHED MULCH LEVEL IS 25 mm BELOW PLANTER BOX EDGE.

FULLY AUTOMATIC DRIP IRRIGATION TO BE PROVIDED FOR ALL GARDEN BED AND LAWN AREAS. DESIGN AND CONSTRUCT TO MEET SYDNEY WATER REQUIREMENTS AND ALL RELEVANT AUSTRALIAN STANDARDS.

FOR ALL COMMUNAL GARDEN AREAS CONNECT THE IRRIGATION SYSTEM TO THE RAIN WATER TANK AND SUPPLEMENT WITH TOWN WATER WHEN REQUIRED.

ALL PRIVATE GARDEN AREAS TO BE IRRIGATED BY TOWN WATER ONLY.

52 WEEK PLANTING ESTABLISHMENT PERIOD. WATERING AS PER SEASONAL REQUIREMENTS DICTATE. WEEDING AS NECESSARY. REPLACEMENT OF DAMAGED, STOLEN OR FAILED PLANTS. LAWN MOWING ON A WEEKLY BASIS, WITH TOP DRESSING AT THE END OF PLANTING ESTABLISHMENT PERIOD. REMOVE STAKES AND TIES.

	<div><div>greenplan</div><div>GPO Box 769, Mascot NSW 2020 P: 1800 464 207 M: 0407 061 386 E: landscape@greenplan.net.au W: www.greenplan.net.au</div></div>	<div>DRAWING NOTES</div> <div><div><div>1. DO NOT SCALE DRAWINGS. WRITTEN DIMENSIONS GOVERN.</div><div>2. ALL DIMENSIONS ARE IN MILLIMETRES UNLESS NOTED OTHERWISE.</div><div>3. ALL DIMENSIONS SHALL BE VERIFIED ON SITE BEFORE PROCEEDING WITH THE WORK.</div><div>4. THIS DRAWING MUST BE READ IN CONJUNCTION WITH ALL RELEVANT CONTRACTS, SPECIFICATIONS AND DRAWINGS.</div><div>5. THE LEVELS SHOWN ON THIS PLAN HAVE BEEN BASED ON SURVEY BY CEDAR SURVERORS, DATED JUNE 2016.</div></div><div><div>THIS DRAWING IS AN UNCONTROLLED COPY. UNLESS NOTED OTHERWISE.</div></div></div> <div><div>A.</div><div>REV</div></div> <div><div>FOR INFORMATION</div><div>DESCRIPTION</div></div> <div><div>23/02/2018</div><div>DATE</div></div>	<div>NORTH</div> <div></div> <div>MAGNETIC NORTH</div>	<div><div>PLANNER</div><div>CHAPMAN PLANNING</div><div>5/187 Marion Street Leichhardt NSW 2040 Tel 02 9560 1718</div></div> <div><div>ENGINEER</div><div>S&amp;G CONSULTANTS</div><div>Suite 113, Level 1, Building A 20 Lexington Drive Belia Vista NSW 2153 Tel 02 8883 4239</div></div>	<div><div>CLIENT</div><div>LANDMARK GROUP</div><div>Suite 2201, Level 22, Tower Two Westfield Bondi Junction Tel 02 8095 6322</div></div> <div><div>ARCHITECT</div><div>DKO</div><div>119 Redfern Street Redfern NSW 2016 Tel 02 8346 4500</div></div>	<div><div>PROJECT</div><div>MIXED USE RESIDENTIAL 19-25 ROBEY STREET MASCOT</div></div> <div><div>DRAWING TITLE</div><div>LANDSCAPE DETAILS TYPICAL CONSTRUCTION</div></div>	<div><div>SCALE STATUS DESIGNED/DRAWN VERIFIED DATE JOB NUMBER</div><div>NOT TO SCALE FOR INFORMATION HG/JW KS 07/02/2018 18705</div></div> <div><div>DRAWING NUMBER</div><div>ISSUE</div><div>LSDA-404</div><div>A</div></div>
--	--	--	--	--	--	--	---